

---

# MILL CREEK RIDGE NATURAL AREA

## Visitor Guidelines

---

The following are PROHIBITED:

- ✿ Motorized vehicles
- ✿ Horses
- ✿ Bicycles
- ✿ Picking flowers or collecting rocks, plants, or other natural materials\*
- ✿ Groups of more than 8 people unless cleared in advance by Land Trust staff
- ✿ Camping or fires
- ✿ Hunting or shooting
- ✿ Harassing wildlife

\*Except for certain cultural purposes or with special permission for research or restoration purposes

Please remember to:

- ✿ Prevent spreading weed seeds! Clean boots before and after visiting.
- ✿ Pack out everything you pack in.
- ✿ Respect our neighbors! Don't trespass, block gates, or cause excessive noise.

Dogs MUST BE LEASHED APRIL 15 – JULY 15 (ground-nesting birds' breeding season). All year, keep dogs under control, and away from wildlife and neighboring property.

Fire prevention: From June 1 – October 1 (dates subject to adjustment at any time), the grassy parking area may be closed to prevent ignition from hot vehicles.

Be aware that this area is actively managed for conservation of natural resources and it is not developed for recreation.

- ✿ Do not disturb monitoring stakes, survey markers or other equipment.
- ✿ You may encounter staff, contractors, or partners working on the property.
- ✿ Please report back to the Land Trust any concerns or items of interest.
- ✿ Columbia Land Trust assumes no liability for visitors' health or safety.

*Please consider donating to Columbia Land Trust!*

*Your support makes protection and stewardship of these lands possible.*

*Visit [www.columbialandtrust.org](http://www.columbialandtrust.org) or call 360-696-0131 for more information.*

---

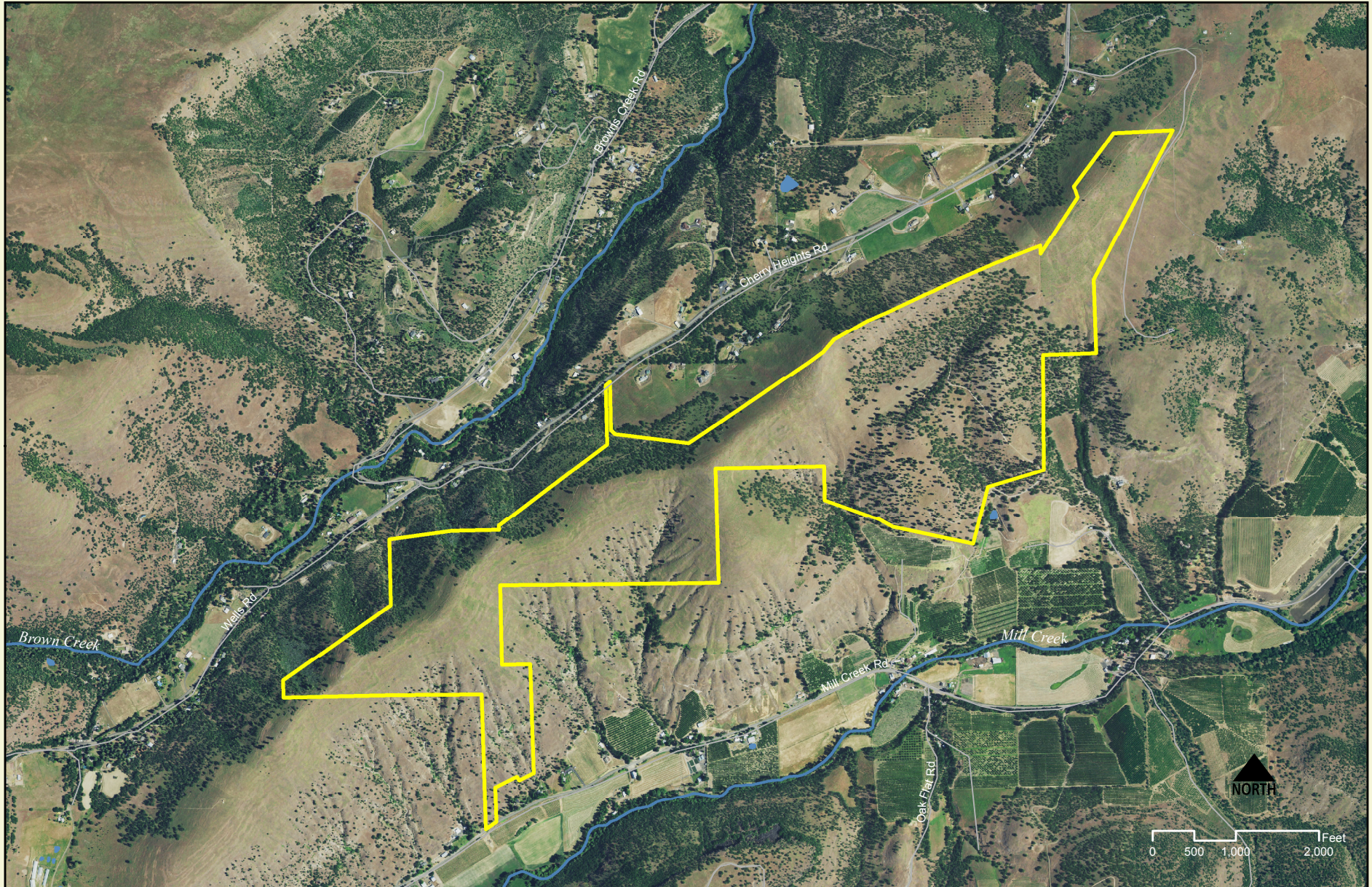


Columbia Land Trust  
CONSERVING THE NATURE YOU LOVE



# Mill Creek Ridge Natural Area

## Overview Map



DISCLAIMER: This map is not a survey and must not be construed as one. This product is for informational purposes and may not have been prepared for, or be suitable for legal, engineering, or surveying purposes. Users should review or consult the primary data and information sources to ascertain the usability of the information.