

2015

Annual Report

Klickitat River at Stinson Flats.
Photo by Doug Gorsline

President's Letter

STEPHEN SHIELDS

I thought about what compelling story from my time on the land I could offer for this letter, but in truth, that's not my style. I tend to think more about systems than stories. I think about what it takes to help build an organization that has the vision, the commitment, and the wherewithal to conserve lands in perpetuity. While many organizations aspire to build something lasting, for us it is an imperative. Land will outlive us all, and unlike other organizations, we're expected to fulfill the promises we make today for generations to come. This is what it takes to be a land trust, to be the people others count on to preserve what is precious in a changing world.

Land will outlive us all, and unlike other organizations, we're expected to fulfill the promises we make today for generations to come.

We have accomplished a good deal on the ground this past year, important projects that you can read about in issues of *Fieldbook* and on our website. What we don't often share is that conserving land is not easy. It takes conservationists and landowners, enthusiastic people who have the imagination and commitment to work at something for years before the

relationships they forge, the funding they secure, and the right moment for action converge to allow another piece of the natural world to be conserved. It takes stewardship professionals who understand how best to care for this land, how to plan, and how to ensure the plan is realized. It takes storytellers and supporters sharing why this matters in a world where day-to-day life can be quite disconnected from the natural world. Lastly, it takes all these people working together, day in and day out, so we create an organization others want continually to support, confident that we can and will do what they hope for but cannot achieve on their own.

In 2015 we completed our third strategic plan to guide us into the future. Making sure we have what it takes to conserve land forever was a key part of that plan. We have already come a long way as an organization, and we are on a strong foundation to ensure our mission is always achieved. I count myself fortunate to be part of what Columbia Land Trust is and will become. 🌱

2015

By the Numbers

SUPPORT



3,330

Donors

27

Staff Members

STEWARDSHIP



74,800

NATIVE TREES & SHRUBS

Planted by
Volunteers, Crew
& Land Trust
Stewards



992

WEED-TREATED
ACRES

CONSERVATION



28,000

ACRES CONSERVED 1990-2015

758

ACRES CONSERVED In 2015

7

PROJECTS CLOSED In 2015

VOLUNTEERS



\$66,548

VALUE
of the Trust's
2015 Volunteer
Contributions



241

ACTIVE
VOLUNTEERS



4,133

VOLUNTEER HOURS
(direct contribution and
driving contribution)



25

SITE STEWARDS



31

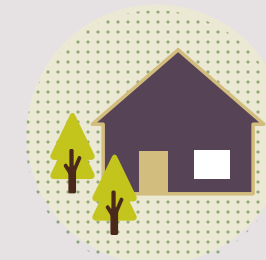
VOLUNTEER
EVENTS



57

PROPERTIES
Monitored by
Volunteers

BACKYARD HABITAT CERTIFICATION PROGRAM*

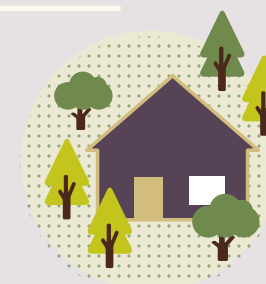


162

ACRES ENROLLED

44

ACRES NEWLY
CERTIFIED



14,015

NATIVE TREES & SHRUBS
Planted on Certified Projects

*A program run in partnership
with the Audubon Society
of Portland

2015

Project Highlights



[d]

286
ACRES

**Rainbow Farm
& Atfalati Prairie**
Washington County, OR

Two properties in the Tualatin River floodplain totaling 286 acres were conserved last summer to protect riverside forest habitat and allow for the restoration of rare, native wet prairie within the Portland Metro area.

51.5
ACRES

**East Fork Lewis
River, Rock Creek**
Clark County, WA

This acquisition protects 51.5 acres and a mile of Rock Creek shoreline in the East Fork Lewis River, an important site for spawning and egg incubation for winter steelhead, which are listed as threatened under the federal Endangered Species Act.

[d] Atfalati Prairie along the Tualatin River in Washington County, OR

80
ACRES

West Fork Grays River
Pacific County, WA

In August, we accepted the donation of 80 acres in the upper Grays Bay Watershed with two large tributaries and conifer forests hosting species from salmon to bear, and with forest restoration the site could support nesting marbled murrelet and Northern spotted owls.

30
ACRES

Deep River
Wahkiakum County, WA

An additional 30 acres was conserved in the Grays Bay Watershed in September, bringing the total conserved acreage in the area to 187 acres, a part of a larger project at the mouth of the Deep River where tidal restoration will benefit numerous listed fish species and waterfowl.

For comprehensive descriptions of all 2015 activities, download our 2015 Conservation & Restoration Report at columbialandtrust.org/2015CRR

2015

Financial Report

Where Your Dollars Go

We leverage your annual gifts to conserve and restore land. Our financial audit shows that in 2015, your gifts helped us add \$1.9 million of conserved land, spend \$1.4 million on direct restoration and stewardship of land, and grow our permanently restricted stewardship funds by \$520,000.

In addition, with your support, we conserved another \$2.1 million of land—one of the very last upland forests along the Columbia River lowlands—that is held by partners and not shown on our books. We also accepted a conservation easement on 161 acres of top-priority habitat in the upper Hood River Valley. When conservation property and our partner projects are factored in, program efforts accounted for 87 percent of expenses in 2015.

Assets

Cash & Savings.....	1,622,312.00
Receivables.....	925,593.00
Other Assets.....	33,999.00
Investments	6,061,570.00
Fixed Assets	49,375.00
Conservation Property.....	49,100,978.00
Total Assets.....	57,793,827.00

Liabilities

Accounts Payable and Accrued Expenses	394,669.00
Contracts & Notes Payable	40,000.00
Conservation Property*	6,363,594.00
Total Liabilities.....	6,798,263.00

Net Assets

Unrestricted	44,531,477.00
Temporarily Restricted	2,613,873.00
Permanently Restricted	3,850,214.00
Total Net Assets.....	50,995,564.00

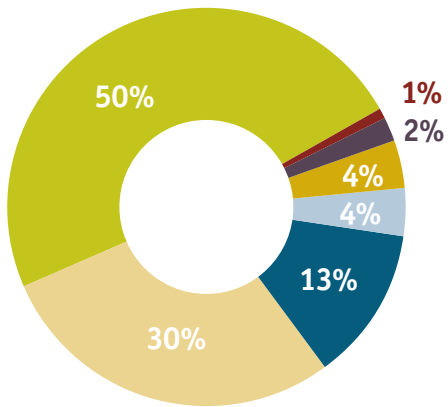
Total Liabilities and Net Assets.....	57,793,827.00
Change in Net Assets.....	2,249,506.00

Land Purchases

Donated Land	213,776.00
Purchased Land	1,740,724.00
Total Land Purchases	1,954,500.00

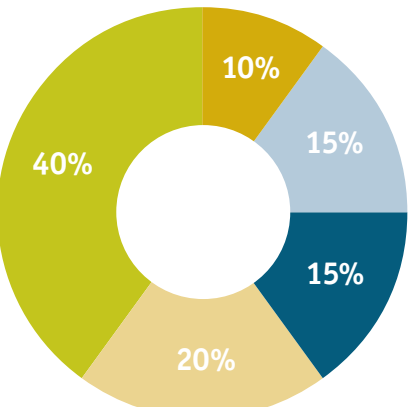
*held on behalf of local governments

Revenue



Grants.....	2,982,769.00
Donations.....	1,763,479.00
Other Income.....	746,008.00
Donated Land.....	213,776.00
Special Events.....	243,180.63
Private & Govt. Grants	105,000.00
In-Kind Revenue	61,616.00
Investment Income.....	(182,810.00)
Total Revenue	5,933,018.63

Expenses



Land Stewardship.....	1,468,737.00
Land Conservation	747,896.00
Administration	551,054.00
Fundraising.....	564,419.63
Public Outreach	351,406.00
Total Expenses	3,683,512.63